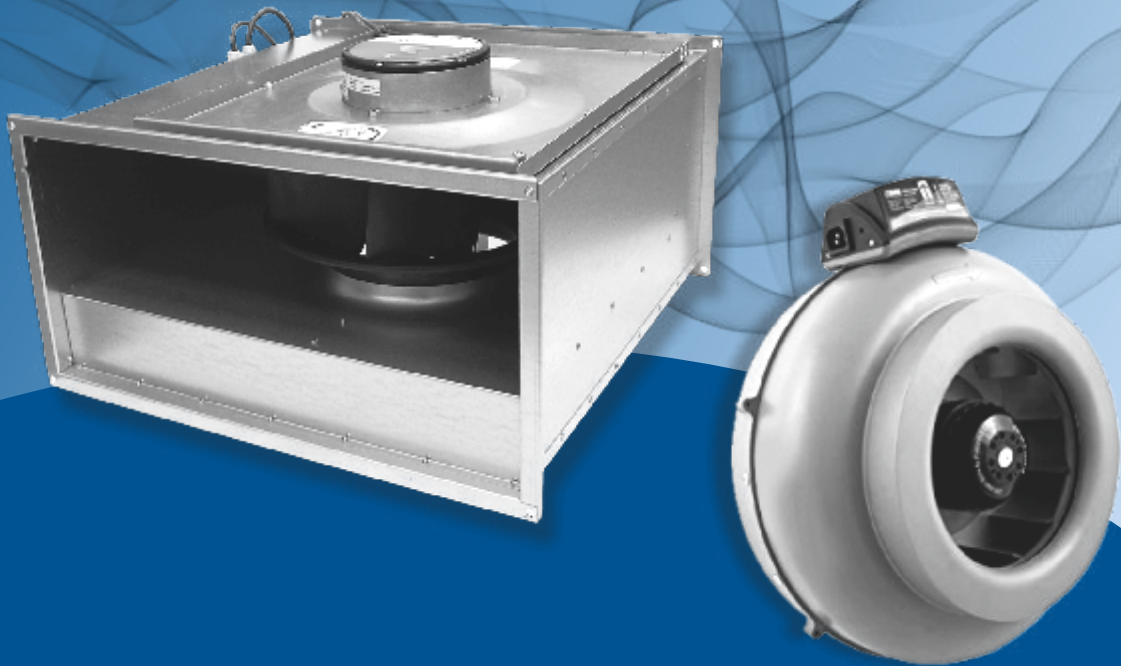




**SUBURBAN INDUSTRIAL
WORKS PVT. LTD.**



**DRB SERIES RECTANGULAR
DIF SERIES CIRCULAR
INLINE FAN**



An ISO 9001 : 2008
Certified Company



Sarala

www.saralafans.com

ABOUT US

SUBURBAN INDUSTRIAL WORKS PVT. LTD. was incepted in the year 1981 for manufacture of Centrifugal and Axial Flow Fans with complete infrastructural setup with design, man power, plant and machinery. Personnel with experience of decades in respective field along with technically and qualified support staffs soon changed the complexion of the organization. Mingled with the product quality and a strong marketing network within a short span of time the company emerged as a force to reckon with HVAC, Processing and other core sector industries.

COMPANY PHILOSOPHY

With our established product credibility throughout the country our mission is to keep pace with the continuous and up-gradation of technology as per demands of different segment of industry and excel with the product quality simultaneously.

In support of our mission we are already an ISO 9001:2008 Certified organization and our products have been conferred with the certification of the world body of our trade Air Movement and Control Association (AMCA), Illinois, USA for specific range of our product.

QUALITY MANAGEMENT

SIWL has adopted very strict quality measures to ensure the uniform acceptable quality keeping in view the requirement of products and the application are met all times. Right from inputs to finished products the raw materials are tested from reputed and Govt. Approved test house before processing the finish products.

During manufacture all products are subject to DP, Radiographic, Ultrasonic, X-Ray Tests as and when required. All Rotor portion are subject to Dynamic Balancing before assembly as per ISO: 1940.

Any further tuning required is carried out by our additional facility of Portable Dynamic Balancing Machine. To ensure meeting guaranteed performances of products we have Testing Laboratory/ Test Beds for testing of fans as per AMCA, BS and IS Standards supported with varied range of measuring instruments with updated calibration



An ISO 9001 : 2008
Certified Company



DIF SERIES- CIRCULAR INLINE FANS



DIF Series circular duct inline fan by SIWENT is very compact in respect to the capacity and is easy to install. Our fan feature is less weight, low noise, low vibration, high efficiency and completely safe in operation.

FEATURES:

- ◆ The housing is made from quality deep-stretch cold rolling steel.
- ◆ Connector box made from fire rated grade material.
- ◆ Motor Protection IP: 44.
- ◆ Motor insulation Class F.
- ◆ Continuous duty operation.
- ◆ Permissible ambient temp. -20° C to $+60^{\circ}$ C.
- ◆ High quality bearing totally maintenance free.

INSTALLATION

Galvanized steel metal bracket is provided for installation. The fans are built with extended Collar at inlet and outlet to allow the connection of duct with ease.

SPEED CONTROLLER

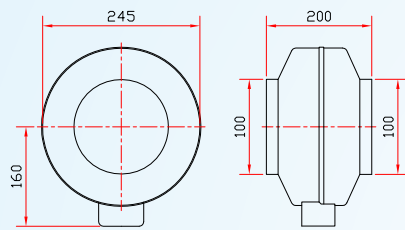
If the desired quantity of air is variable then the same can be controlled via a regulator, which can be supplied as an optional accessory alongwith the fan.

APPLICATION

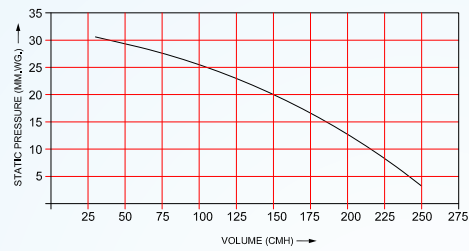
DIF Series fans provide Ventilation , Circulation and Boosting of air for application in Hotels, Auditoriums, Super Markets, Airports, Hospitals, Offices, Theaters, Toilets, etc.

DIF-100

Dimension Details



CHARACTERISTIC CURVE

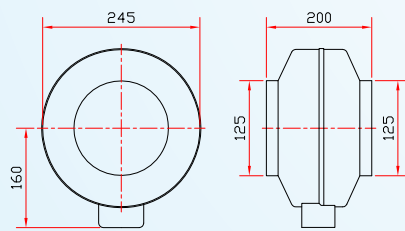


TECHNICAL DETAILS

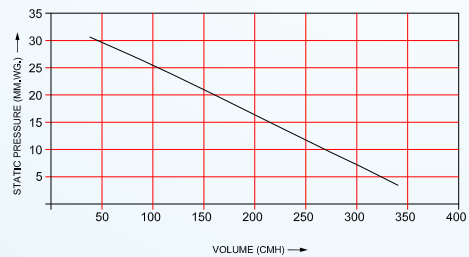
FAN MODEL	AIR FLOW	SPEED	POWER INPUT	VOLTAGE	FREQUENCY	CURRENT	CAPACITOR	SOUND PRESSURE	WEIGHT
	CMH	RPM	W	VAC	Hz	A	μF	dB(A)	Kgs
DIF-100	255	2500	60	230	50	0.26	2μF/450V	52	3.5

DIF-125

Dimension Details



CHARACTERISTIC CURVE

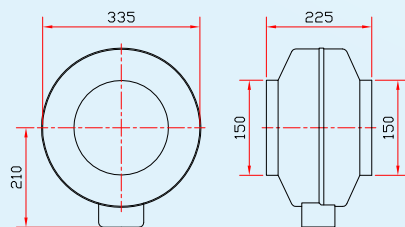


TECHNICAL DETAILS

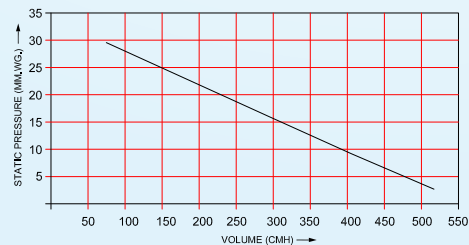
FAN MODEL	AIR FLOW	SPEED	POWER INPUT	VOLTAGE	FREQUENCY	CURRENT	CAPACITOR	SOUND PRESSURE	WEIGHT
	CMH	RPM	W	VAC	Hz	A	μF	dB(A)	Kgs
DIF-125	325	2375	70	230	50	0.3	2μF/450V	58	3.5

DIF-150

Dimension Details



CHARACTERISTIC CURVE

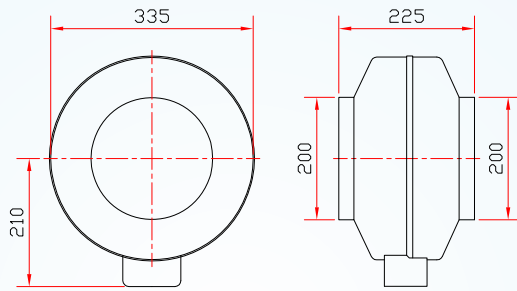


TECHNICAL DETAILS

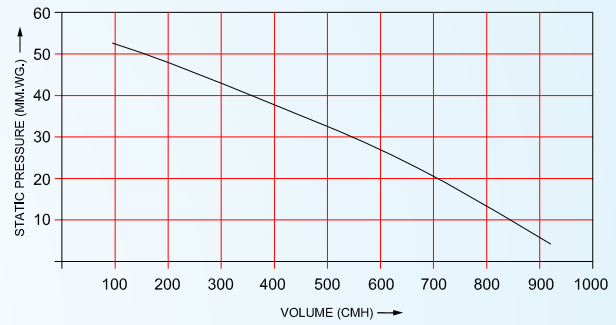
FAN MODEL	AIR FLOW	SPEED	POWER INPUT	VOLTAGE	FREQUENCY	CURRENT	CAPACITOR	SOUND PRESSURE	WEIGHT
	CMH	RPM	W	VAC	Hz	A	μF	dB(A)	Kgs
DIF-150	533	2465	90	230	50	0.43	3μF/450V	57	4.5

DIF-200

Dimension Details



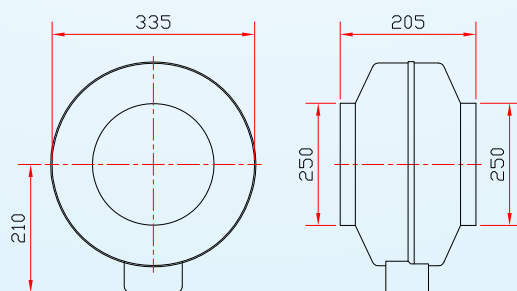
CHARACTERISTIC CURVE



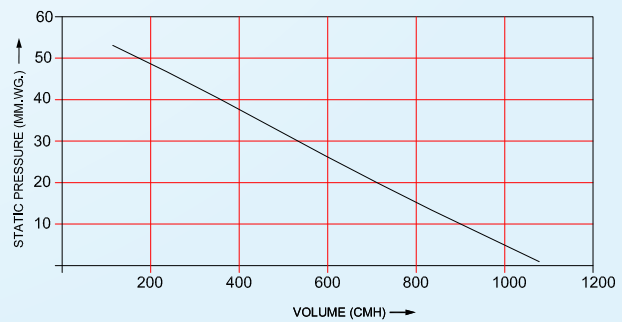
TECHNICAL DETAILS									
FAN MODEL	AIR FLOW	SPEED	POWER INPUT	VOLTAGE	FREQUENCY	CURRENT	CAPACITOR	SOUND PRESSURE	WEIGHT
	CMH	RPM	W	VAC	Hz	A	μF	dB(A)	Kgs
DIF-200	885	2578	140	230	50	0.65	4μF/450V	60	5.7

DIF-250

Dimension Details



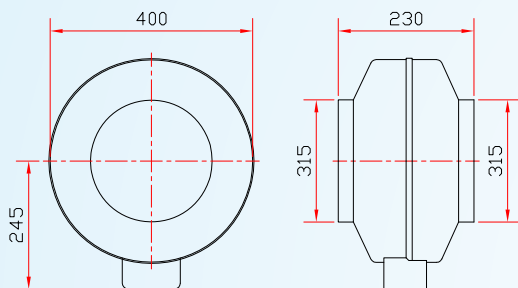
CHARACTERISTIC CURVE



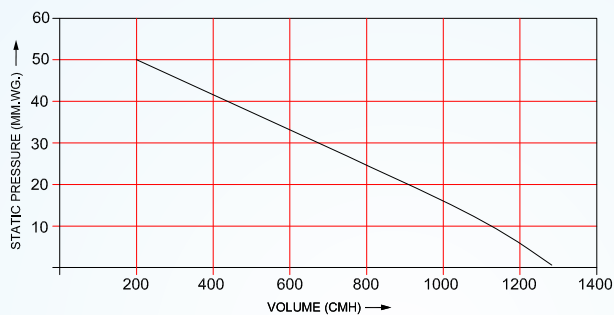
TECHNICAL DETAILS									
FAN MODEL	AIR FLOW	SPEED	POWER INPUT	VOLTAGE	FREQUENCY	CURRENT	CAPACITOR	SOUND PRESSURE	WEIGHT
	CMH	RPM	W	VAC	Hz	A	μF	dB(A)	Kgs
DIF-250	1066	2524	170	230	50	0.8	4μF/450V	58	5.7

DIF-315A

Dimension Details



CHARACTERISTIC CURVE

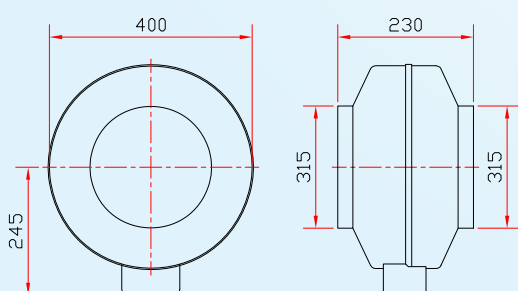


TECHNICAL DETAILS

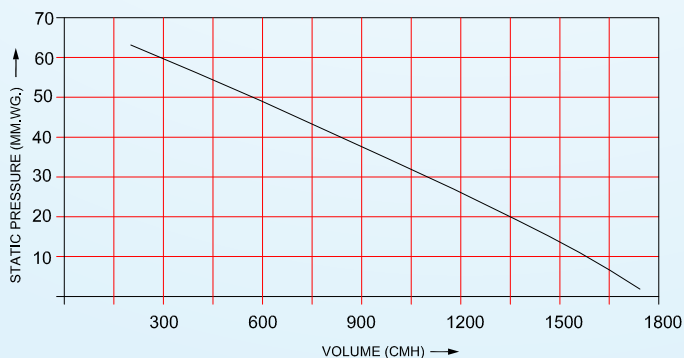
FAN MODEL	AIR FLOW	SPEED	POWER INPUT	VOLTAGE	FREQUENCY	CURRENT	CAPACITOR	SOUND PRESSURE	WEIGHT
	CMH	RPM	W	VAC	Hz	A	μF	dB(A)	Kgs
DIF-315A	1394	2750	160	230	50	0.71	16μF/450V	62	6.6

DIF-315B

Dimension Details



CHARACTERISTIC CURVE



TECHNICAL DETAILS

FAN MODEL	AIR FLOW	SPEED	POWER INPUT	VOLTAGE	FREQUENCY	CURRENT	CAPACITOR	SOUND PRESSURE	WEIGHT
	CMH	RPM	W	VAC	Hz	A	μF	dB(A)	Kgs
DIF-315B	1850	2630	300	230	50	13	8μF/450V	65	6.6

DRB SERIES- RECTANGULAR INLINE FANS



DRB SERIES Rectangular Inline Fans by SIWENT are suitable for many general ventilation applications where the space for installation is limited.

FEATURES:

- ◆ The housing is made from pre-galvanized quality deep-stretch cold rolling steel.
- ◆ Connector box made from fire rated grade material.
- ◆ Motor Protection IP :44.
- ◆ Motor insulation Class F.
- ◆ Continuous duty operation.
- ◆ Permissible ambient temp. -20° C to +60° C.
- ◆ High quality bearing totally maintenance free.

INSTALLATION

The fans are designed for inline rectangular air duct mounting and require no special fixing in case of direct connection. In case of connection through the flexible connectors the fan is fixed to a building by means of supports, suspension brackets or fixation brackets. The fans can be mounted in any position with respect to the pointer direction on the casing

SPEED CONTROLLER

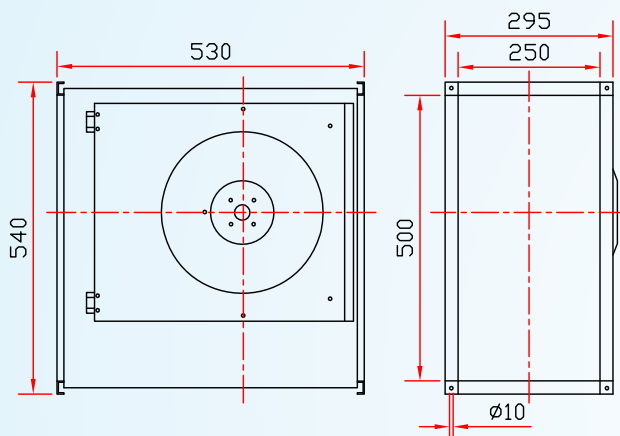
If the desired quantity of air is variable then the same can be controlled via a regulator, which can be supplied as an optional accessory alongwith the fan.

APPLICATION

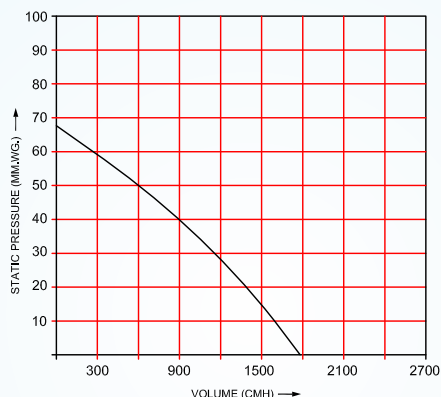
DRB Series fans provide Ventilation , Circulation and Boosting of air for application in Hotels, Auditoriums, Super Markets, Airports, Hospitals, Offices, Theaters, Toilets, etc

DRB- 500 x 250

Dimension Details



CHARACTERISTIC CURVE

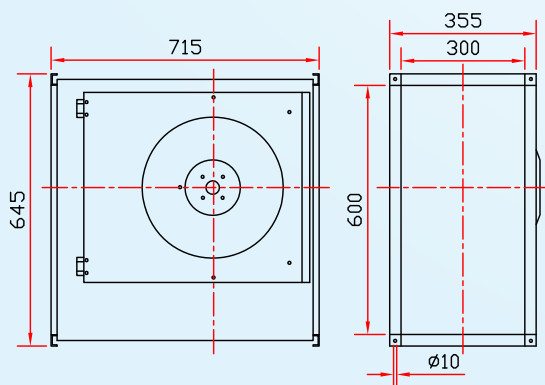


TECHNICAL DETAILS

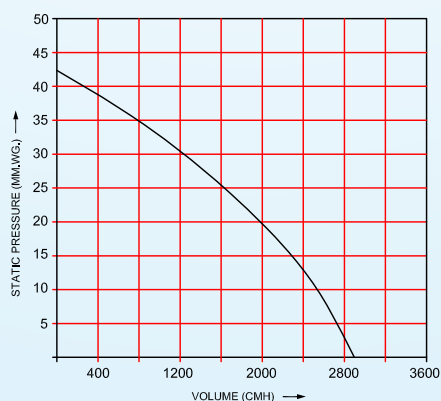
FAN MODEL	AIR FLOW	SPEED	POWER INPUT	VOLTAGE	FREQUENCY	CURRENT	CAPACITOR	SOUND PRESSURE	WEIGHT
	CMH	RPM	W	VAC	Hz	A	μF	dB(A)	Kgs
DRB-500X250	1730	2400	315	230	50	1.37	8μF/450V	58	17

DRB- 600 x 300

Dimension Details



CHARACTERISTIC CURVE

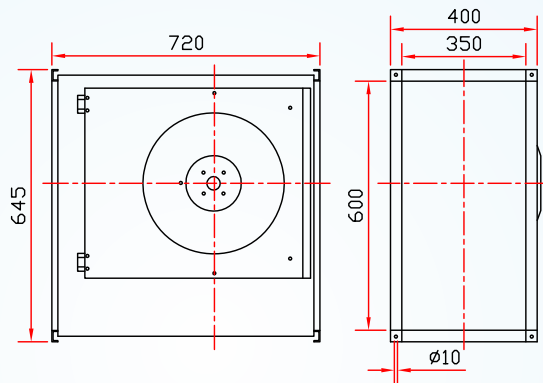


TECHNICAL DETAILS

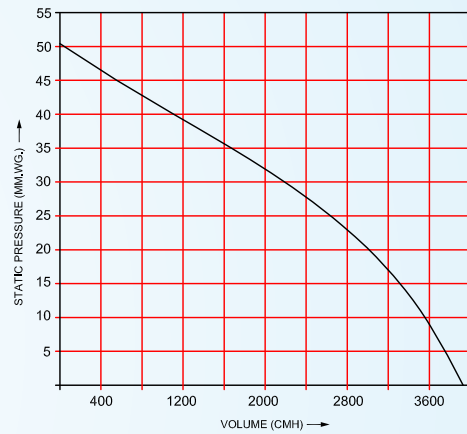
FAN MODEL	AIR FLOW	SPEED	POWER INPUT	VOLTAGE	FREQUENCY	CURRENT	CAPACITOR	SOUND PRESSURE	WEIGHT
	CMH	RPM	W	VAC	Hz	A	μF	dB(A)	Kgs
DRB-600X300	2840	1300	318	230	50	1.46	6μF/450V	52	34

DRB- 600 x 350

Dimension Details



CHARACTERISTIC CURVE

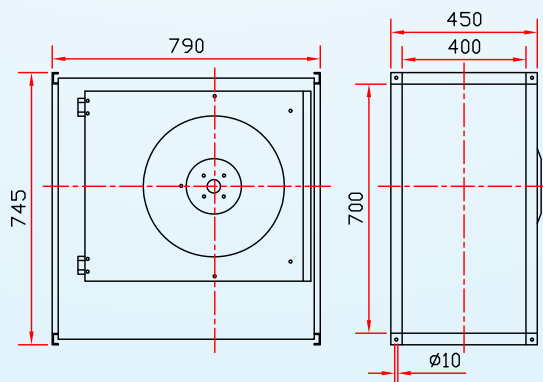


TECHNICAL DETAILS

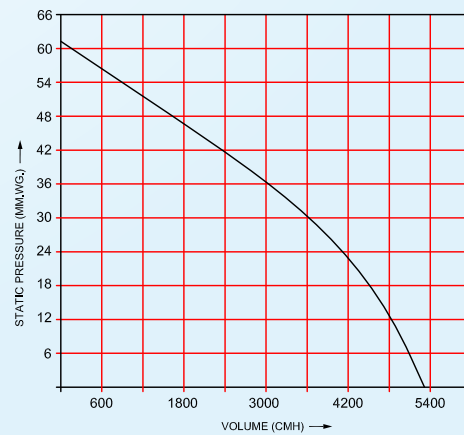
FAN MODEL	AIR FLOW	SPEED	POWER INPUT	VOLTAGE	FREQUENCY	CURRENT	CAPACITOR	SOUND PRESSURE	WEIGHT
	CMH	RPM	W	VAC	Hz	A	μF	dB(A)	Kgs
DRB-600X350	3900	1370	515	230	50	2.45	12μF/450V	55	35

DRB- 700 x 400

Dimension Details



CHARACTERISTIC CURVE

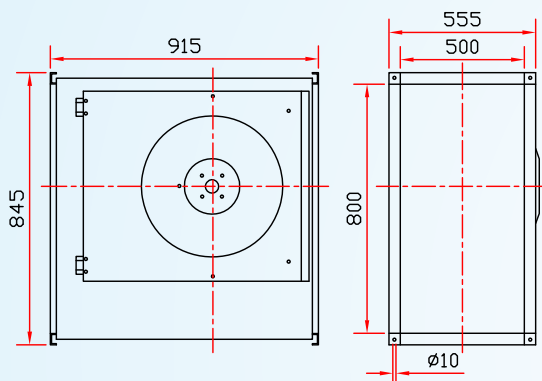


TECHNICAL DETAILS

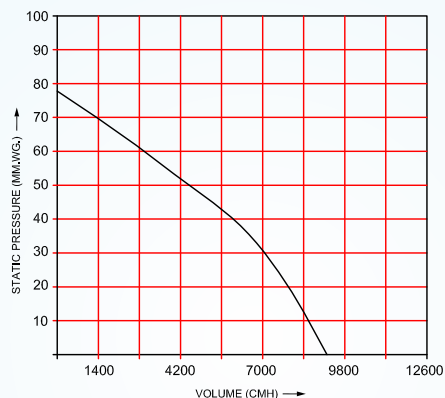
FAN MODEL	AIR FLOW	SPEED	POWER INPUT	VOLTAGE	FREQUENCY	CURRENT	CAPACITOR	SOUND PRESSURE	WEIGHT
	CMH	RPM	W	VAC	Hz	A	μF	dB(A)	Kgs
DRB-700X400	5300	1250	730	230	50	3.3	16μF/450V	56	47

DRB- 800 x 500

Dimension Details



CHARACTERISTIC CURVE

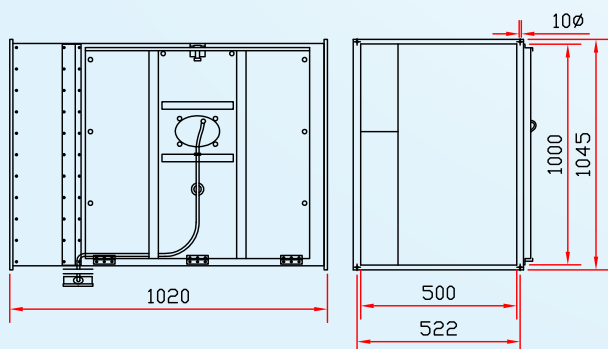


TECHNICAL DETAILS

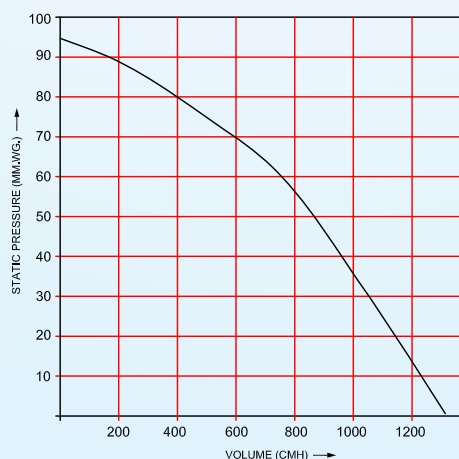
FAN MODEL	AIR FLOW	SPEED	POWER INPUT	VOLTAGE	FREQUENCY	CURRENT	CAPACITOR	SOUND PRESSURE	WEIGHT
	CMH	RPM	W	VAC	Hz	A	μF	dB(A)	Kgs
DRB-800X500	9180	1280	1610	230	50	7.7	25μF/450V	62	68

DRB- 1000 x 500

Dimension Details



CHARACTERISTIC CURVE



TECHNICAL DETAILS

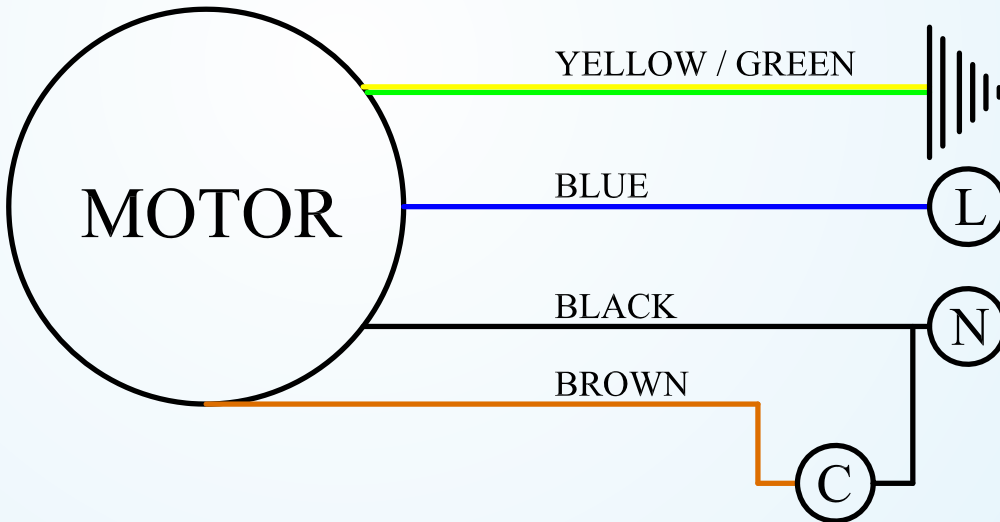
FAN MODEL	AIR FLOW	SPEED	POWER INPUT	VOLTAGE	FREQUENCY	CURRENT	CAPACITOR	SOUND PRESSURE	WEIGHT
	CMH	RPM	W	VAC	Hz	A	μF	dB(A)	Kgs
DRB-1000X500	12470	1350	2450	400	50	4.9	-	67	86

WIRING DIAGRAM



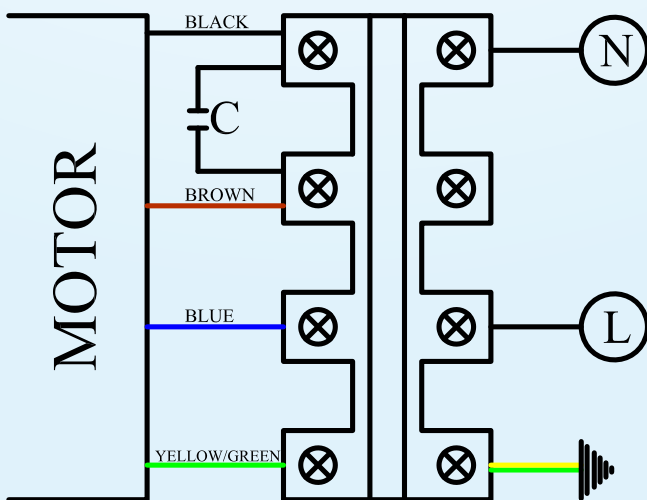
DIF CIRCULAR Inline fan is suitable for 220V, 3 Ph, 50Hz supply

SINGLE PHASE CKT DIAGRAM FOR DIF FANS

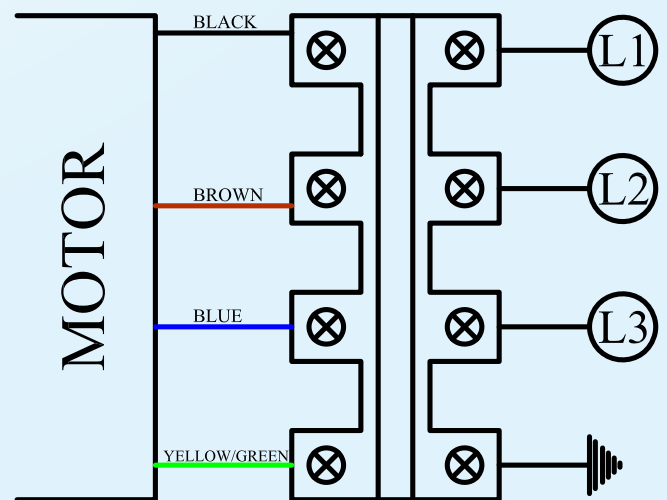


DRB Rectangular Inline fan is suitable for 220V, 1 Ph, supply or 415 V, 3Ph 50 Hz.

SINGLE PHASE CKT DIAGRAM FOR DRB FAN



THREE PHASE CKT DIAGRAM FOR DRB FAN





**SUBURBAN INDUSTRIAL
WORKS PVT. LTD.**

Head Office / Works

57/2A, Diamond Harbour Road, Kolkata- 700 023, India.

Phone : +91-33-2449 5343, 8443824010

Telefax : +91-33 2449 5343

Email : siwkolkata@saralafans.com

Web : www.saralafans.com

BANGALORE | CHENNAI | NEW DELHI | BHUBHANESHWAR